



MBA Placement Report

Summer Internship Recruitment Programme 2014

Ref No: SN/SMER/SIBM/2014/09

June 10, 2014

The Chairman,
Placement Office
Symbiosis Institute of Business Management (SIBM),
Symbiosis Knowledge Village,
Gram-Lavale, via Sus Road,
Tal Mulshi, Pune District,
Pune 412115

Re: Audit of the Summer Internship Placement Report of the 2013-15 batch of the Master of Business Administration (MBA) programme

Dear Sir,

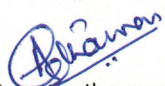
CRISIL has audited the placement report prepared by Symbiosis Institute of Business Management (SIBM), Pune for the summer internship placements of students of the 2013-15 batch of the MBA programme. The placement report is the responsibility of SIBM. Our responsibility is to validate the information provided in the report with the relevant documentation, and comment on the placement report's conformance with the Indian Placement Reporting Standards (IPRS), version 2.1.

In this context, CRISIL confirms the following:

1. For the purpose of the audit, we have obtained all the information and explanations, which to the best of our knowledge and belief were necessary. In our opinion, the Placement Report does comply with the Indian Placement Reporting Standards, Version 2.1.
2. The validation of information presented in the report is based on communication received by SIBM from recruiting companies. CRISIL has not independently sourced any information or documentation.
3. CRISIL has verified information regarding stipends and location details, based on communication received from recruiters. Information with respect to function for 81 out of 174 students has been verified with specialisation-related communication from SIBM, based on the Institute's undertaking that the placement process allows students to apply only for functions that match their specialisation. For the remaining 93 students, the function has been verified, based on communication received from recruiters.
4. Proof of acceptance of the offers was not available for 115 out of 174 students.
5. The number of students opting out was based on communication received from SIBM, and was not independently verified by CRISIL.

Thank you,

Best regards,

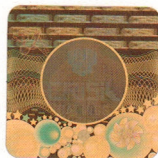


Anurag Jhanwar,
MRICS

Director, Education Gradings

Tel: +91 22 3342 3234

Email: anurag.jhanwar@crisil.com



Contents

1	Classification of entire placement pool.....	3
2	Sector-wise Classification	3
3	Function-wise Classification	4
4	Location-wise Classification	4
4.1	Global Classification	4
4.2	Indian Locations Classification	4
5	Compliance Statement.....	5

List of Tables

Table 1.1: Classification of the entire placement pool.....	3
Table 1.2: Classification of internships based on stipend status	3
Table 2: Classification of internships based on sector	3
Table 3: Classification of internships based on function.....	4
Table 4.1: Classification of internships based on location	4
Table 4.2: Classification of internships based on location within India	4
Table 5: List of deviations from standards with reasons for the same	5

Placement Report

We have prepared the placement report as per the Indian Placement Reporting Standards. The detailed report, which has been audited by CRISIL, is presented below.

1 Classification of entire placement pool

Categories	Number
1. Total batch strength	213
1a. Total students eligible for sitting in Summer Placements-	211
1b. Total students not eligible for sitting in Summer placements	2
2. Total students eligible for sitting in Summer Placements	211
2a. Seeking internship through the institute	174
2b. Not seeking internship through the institute	37

Table 1.1: Classification of the entire placement pool

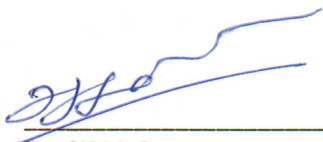
Nature of the internship	With Stipend	Without Stipend	Data Not Available
Seeking internship through the institute	155	11	8
Not seeking internship through the institute	NA	NA	NA

Table 1.2: Classification of internships based on stipend status

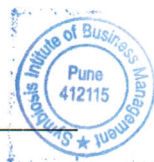
2 Sector-wise Classification

Sector	No. of Offers accepted
Banking, Financial Services and Insurance (BFSI)	25
Conglomerates	28
Consulting	6
FMCG/Consumer Durables	48
IT/IT Enabled Services (ITES)	30
Manufacturing	23
Pharmaceutical/Healthcare	4
Telecom	2
Others	8
Total	174

Table 2: Classification of internships based on sector



For SIBM, Pune



For CRISIL Limited, Mumbai



3 Function-wise Classification

Function	No. of Offers accepted
Finance	34
Human Resources (HR)	45
Marketing/Sales	75
Operations/Supply Chain	20
Total	174

Table 3: Classification of internships based on function

4 Location-wise Classification

4.1 Global Classification


Locations	No. of Offers accepted
Africa	1
Americas	-
Europe	-
India	170
Rest of Asia	3
Total	174

Table 4.1: Classification of internships based on location

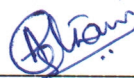
4.2 Indian Locations Classification

Indian Locations	No. of Offers accepted
Bangalore	18
Mumbai	24
NCR	16
Pune	10
Rest Of India	7
Data not available	95
Total	170

Table 4.2: Classification of internships based on location within India


For SIBM, Pune







For CRISIL Limited, Mumbai

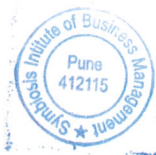
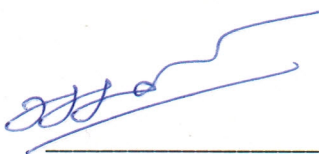
5 Compliance Statement

This placement report has been prepared as per the Indian Placement Reporting Standards, Version 2.1.

The instances where the report deviates from the standards, and the reasons for them are mentioned below:

Sl. No.	Deviation from the standards	Reason

Table 5: List of deviations from standards with reasons for the same



For SIBM, Pune



For CRISIL Limited, Mumbai